



Loose cargo gear markings

Dear Captain

Please be aware that one of our vessels in Brisbane, Australia was off hired recently due to the cargo loose gears distinguishing marks on the sheave block, shackles and hooks not being fully visible as they had rusted away. Refer below photos.



NO. 1 CARGO BLOCK



NO. 1 UPPER SHACKLE



NO. 1 LOWER SHACKLE



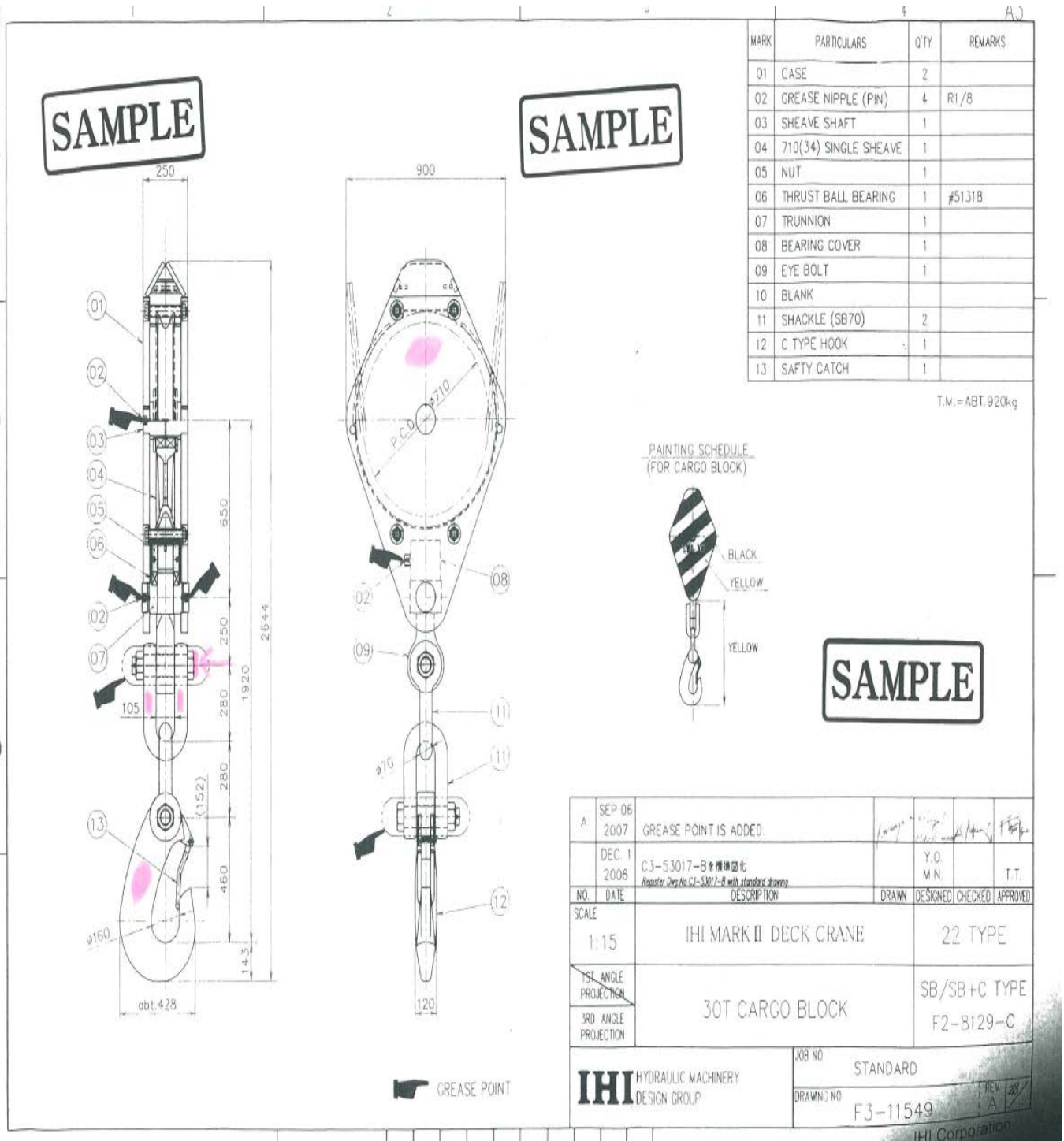
NO. 1 CARGO HOOK

These had to be remarked in a different area and a Class NK surveyor had to attend to verify the new stamps before cargo could be worked.

To prevent recurrence, we request all vessels to ensure compliance with the following:



➤ Identify crane diagram indicating location of markings





- **Clean and locate the marked area on all the loose gear, varnish / paint the marks to prevent further deterioration of the marks.**



Crane no. 4 sheave block U573-1



Crane no.4 SB70 shackles U573-2



Crane no.4 SB70 shackles U573-3



Crane no. 4 hook U573-4

- **Ensure classification society approval stamp is present and legible on the loose gear**



Marking by classification society



➤ Also ensure the markings on loose gear are as per the numbers indicated in the cargo gear certificate

PART 32
Issue 2

COPY

CARGO HANDLING EQUIPMENT

Fome MO 32/2

**CERTIFICATE OF TEST AND EXAMINATION OF CARGO GEAR, BEING
BLOCKS, CHAINS, RINGS, HOOKS, SHACKLES, SWIVELS, ETC**

Ship or store

Certificate No S14-2-A

<i>Distinguishing numbers or marks of articles</i>	<i>Description of articles</i>	<i>Material of articles</i>	<i>Number of articles tested</i>	<i>Proof load applied</i>	<i>Date of test</i>	<i>Safe working load</i>	<i>Name and address of makers or suppliers of articles</i>
S14-2-1	Moving Sheave Blocks	JIS SS400 etc	1	600KN	12-01-11	150KN	Euro Trading Japan Co., Ltd.
S14-2-2	BB70 Shackles	JIS S25C	1	600KN	12-01-11	300KN	No.9 KOWA BLDG 8-10, AKASAKA 1-CHOME, MINATO-KU, TOKYO 107-0052, JAPAN
S14-2-3	SB70 Shackles	JIS S25C	1	600KN	12-01-11	300KN	
S14-2-4	Hooks	JIS S45C	1	600KN	12-01-11	300KN	

Regards

Captain Rajaraman

DPA

DISTRIBUTION

- All Masters
- Crewing Managers
- Superintendents
- Marine Manager
- HSE Q Manager
- Training Manager